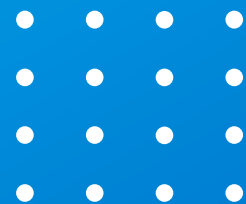




cromex



**WE ARE
ALL
MASTER**

Support and
technical
consulting



Trust and
quality



*We deliver with the **quality and assertiveness**
of those who really know what they do.*

Innovations

Sustainability

Colours

White

Black

Additives

Agility and assertiveness
in development



Result with
excellence



48 years of experience in MASTERBATCHES

- Leader in the Brazilian market
- **10,000 registered colors**
- More than **500 registered additives**
- **380 new solutions** development each year
- **National and international distributors**





About us



2 plants in Brazil:
São Paulo (SP) and
Simões Filho (BA)



Production Capacity of
80,000 tons/year



Around **500**
employees

📍 Manufacturing Unit | Simões Filho | BA





FROM BRAZIL TO THE WORLD



We export to around

40 countries



25%

of our production
is exported



Mission

Provide **innovative and competitive solutions** to plastic transformers, seeking alternatives that **reduce environmental impacts**, in favor of the quality of life of people and future generations.



Vision

Expand leadership in Brazil with a growing global presence, in a profitable way and recognized as the best option for the customer.

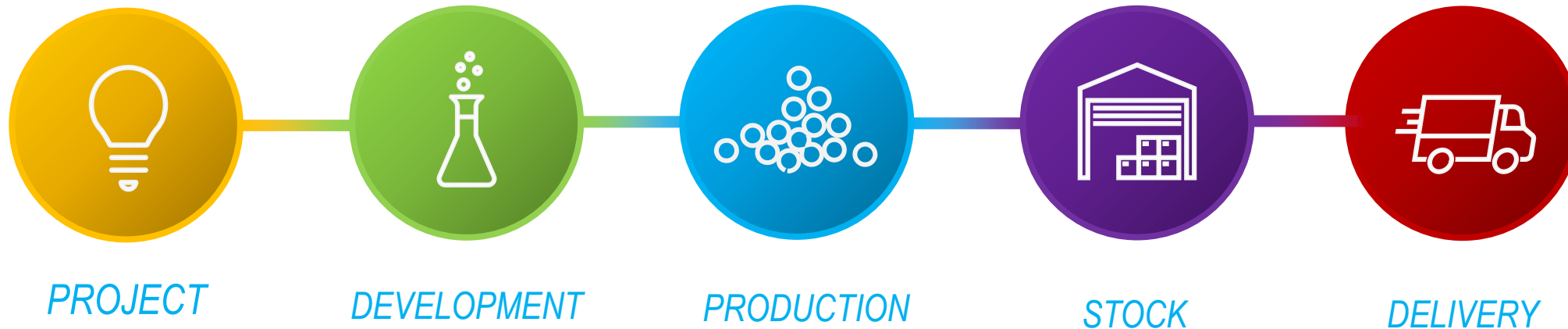


Values

Meritocracy
Agility
Sustainability
Transparency
Excellence in operation
Respect

fast moving Cromex

Result generating products, in your required timing





We operate in various
transformation
processes



Extrusion (sheets / films / filaments
and non-woven / tubes and profiles)



Injection



Blow molding



Rotomolding

A top-down view of three pairs of hands holding plastic granules. The top left pair holds orange granules, the top right pair holds yellow granules, and the bottom center pair holds blue granules. The background is a blue surface with a pattern of plastic granules.

Masterbatches of colors and additives for plastics



White



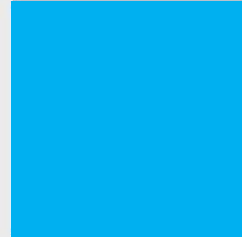
Black



Colors



Additives



White masterbatches

White masterbatches



Excellent tinting power, dispersion and homogenization



Contributes to an adequate stretch

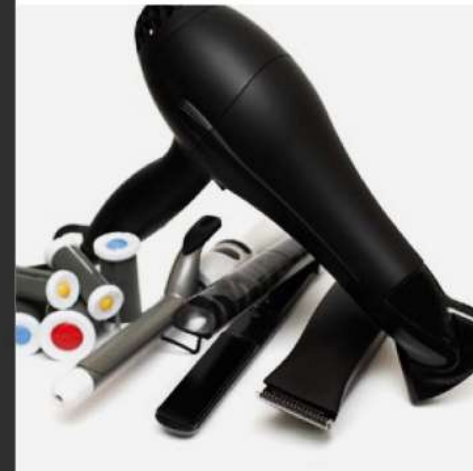
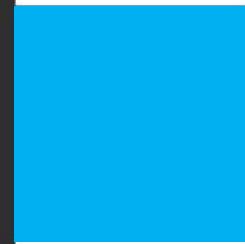


Excellent mechanical properties with good balance stiffness/impact and tear resistance



Compliance with national and international legislation especially for food packaging





Black masterbatches

Black masterbatches



Excellent tinting power



Economy, standard and premium line



Excellent mechanical properties with good balance stiffness/impact and tear resistance



Compliance with national and international legislation especially for food packaging



Colored masterbatches



It is possible to combine colors with different effects, such as: pearly, metallic, glitter, fluorescent, thermochromic, among many others



Portfolio is completely free of heavy metals



We have a Color Development Laboratory, where it is possible to create and apply colors to the final product, allowing you to check and validate the result in a much more agile way



Team of colorists, professionals specialized in color development, evaluation and control to guarantee the results you are looking for





Additives masterbatches

Additives masterbatches



- Anti-blocking
- Anti-statics
- Anti-fog
- Antimicrobials
- Antioxidants
- Process aids
- Oxygen barrier
- Optical Brightener
- Purge compounds
- Sliders
- Release agents
- Desiccants
- Light diffusers
- Light Stabilizers
- Expanders
- Infrared
- Laser markers
- Impact Modifiers
- Nucleating and Clarifying agents
- Odor Reducers

Solutions for different markets

- Agribusiness
- Food and beverages
- Automotive
- Toys
- Footwear
- Civil construction
- Cosmetics & toiletries
- Disposable items
- Small appliances
- Electronics
- Artificial grass
- Flexible packaging
- Rigid packaging
- Major appliances
- Nautical line
- Furniture and decoration
- Technical parts
- Cleaning products
- Raffia
- Textiles (mono and multi-filament)
- Household items





World class R&D laboratory

- High colors **approval rate**
- We are **synonym for quality**
- **Commitment to business**
- **Robust team and high-tech equipment**

R&D laboratory



Robust R&D team of specialists, technicians, colorists and assistants



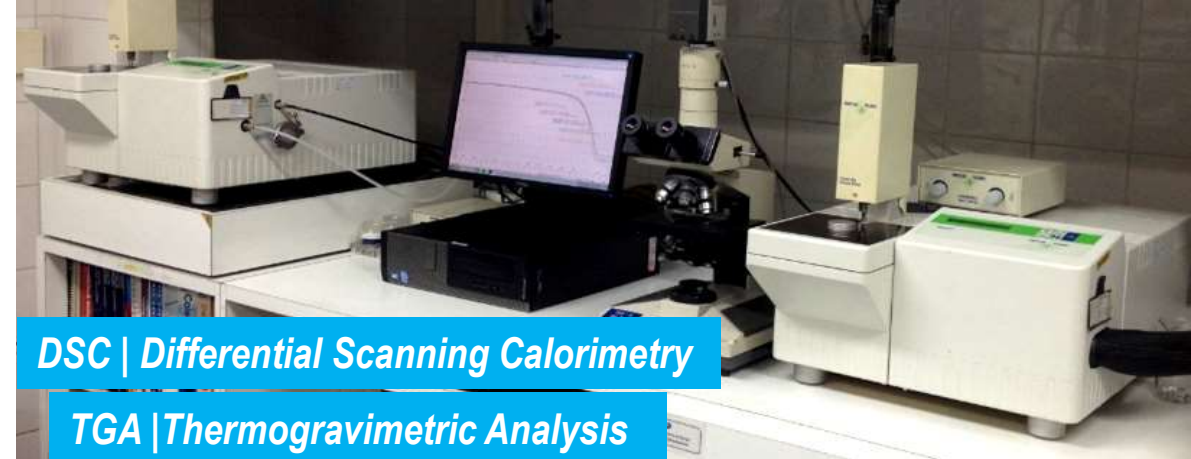
+30 high-tech equipment, analytical and process



Our R&D team is **always available** to customers for consultation



Melt flow index



DSC | Differential Scanning Calorimetry

TGA | Thermogravimetric Analysis



FTIR | Infra-red spectrum



Automatic Notching Machine



Mechanical test



HDT / Vicat | Thermo-mechanical Systems



Extruder



Pendulum Impact System



quality

commitment



Raw materials and finished products quality control



Process parameters optimization



New products process development



Process auditing



Satisfaction surveys and analysis of customer complaints

Certifications

Certified to **ISO 9001**, **ISO 14001** and **ISO 45001**, we prioritize delivering products and services with quality, but always concerned about the environment and the occupational health and safety of all our employees.





Environmental

Energy efficiency, natural resource use, waste management, environmental impact and climate change.

- Water and Wastewater
- Energy
- Waste
- Environmental Education

Social

Human rights, relationships with suppliers, customers, communities, employees, data privacy and security.

- Workplace Accidents
- Health and Safety
- Capacity Building and Training

Governance

Compliance and transparency in our processes. Economic-financial analysis integrated with social-environmental and governance factors

- Fighting Corruption
- Internal Controls
- Direct Economic Value Generated and Distributed

Environment



Heavy metal-free product portfolio and research and development of sustainable solutions



ISO 14001 certification



Regulatory



Reduction in the generation of waste liquid effluents



Water saving and reuse



Reduction of energy consumption



Correct destination of generated residues



Regulatory

Committed to legal compliance, we work on the regulation of our products, according to the legislation of each location and pertinent market

Main legislations:



- Brazil - ANVISA RDC 105/99 (RDC 52/10, RDC 56/12, RDC 326/19 and RDC 589/21 - All harmonized with the GMC in force in Mercosur)
- Europe - Resolution AP (89) 1, Regulation (EU) 10/2011 and its updates



- RoHS Directive



- Mercosul - ABNT NBR NM 300-3:2004
- USA - EN 71-3:2013
- Europa - ASTM F 963



- Europa - 2000/53/EC (ELV) Directive



- REACH (Registration, Evaluation, Authorisation and Restriction of Chemicals)



ACT GREEN, 
LIVE ALL COLORS
Performance and Sustainability

ACT GREEN,
LIVE ALL COLORS



Performance
and Sustainability



rC-Black®

with carbon black
recovered from tires
that have reached
the end of their
useful life



NIR

lack masterbatches
carbon black free for
easy reading on NIR
sorters for recycling



Additives for Recycling

Additives capable of
improving the quality
of PCR for the
transformation process



PCR line

Masterbatches
that use post-
consumer resin as
a vehicle



cromex

GRAPHEX

CROMEX® GRAPHENE



Increase in resistance

Provides greater resistance to traction, bending, impact, scratches, and the thermal and chemical degradation of plastics.



Reduction in energy and material consumption

It is possible to reduce the thickness and weight of plastic parts, reducing resin and energy consumption.



Versatility

The benefits provided can be applied in different resins, for different segments and final products.



Non-tox

Allows application in packaging and plastic parts that will come into contact with food or drinks, as it does not pose a risk to humans, in addition to having a bactericidal effect.

MICROCOLOR[®]

MICRONIZED COMPOUNDS
FOR ROTOMOLDING



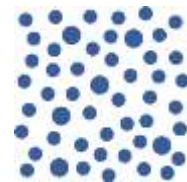
Excelent
surface finish



Additives that
provide more
**weather
resistance**



Allows for
**contact with
potable water**



Particle size
**according to
your need**

Applications: water tanks, vases, playgrounds,
mannequins, kayaks, pallets, among others





cromex



**[WE ARE
ALL
MASTER]**

✉ contact@cromex.com.br

☎ +55 (11) 3856-1010

🌐 www.cromex.com.br

